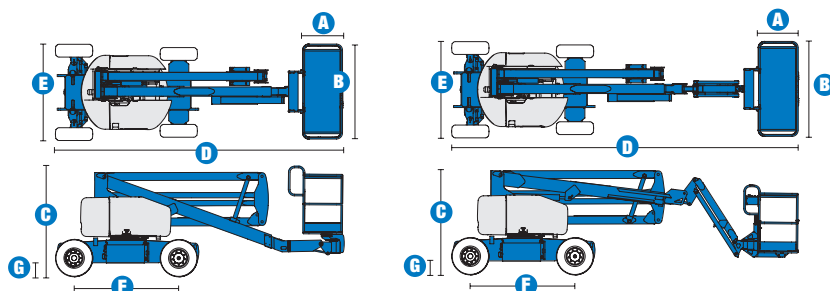


## Specifications



MODELS	Z™-45/25 DC & Bi		Z™-45/25J DC & Bi	
MEASUREMENTS	Metric	US	Metric	US
Working height maximum*	15.87 m	51 ft 6 in	15.94 m	51 ft 9 in
Platform height maximum	13.87 m	45 ft 6 in	13.94 m	45 ft 9 in
Horizontal reach maximum	7.62 m	25 ft	7.65 m	25 ft 1 in
Up-and-over clearance maximum	7.04 m	23 ft 1 in	7.24 m	23 ft 9 in
<b>A</b> Platform length	76 cm	2 ft 6 in	76 cm	2 ft 6 in
<b>B</b> Platform width	1.83 m	6 ft	1.83 m	6 ft
<b>C</b> Height - stowed	2 m	6 ft 7 in	2 m	6 ft 7 in
<b>D</b> Length - stowed	5.56 m	18 ft 3 in	6.83 m	22 ft 5 ft
<b>E</b> Width	1.79 m	5 ft 10.5 in	1.79 m	5 ft 10.5 in
<b>F</b> Wheelbase	2.03 m	6 ft 8 in	2.03 m	6 ft 8 in
<b>G</b> Ground clearance - centre	24 cm	9.5 in	24 cm	9.5 in

PRODUCTIVITY				
Lift capacity	227 kg	500 lbs	227 kg	500 lbs
Platform rotation	180°	180°	160°	160°
Vertical jib rotation	—	—	135° (+78°/-57°)	135°
Turntable rotation	355° non-continuous		355° non-continuous	
Turntable tailswing	zero	zero	zero	zero
Drive speed - stowed	4.8 km/h	3.0 mph	4.8 km/h	3.0 mph
Drive speed - raised **	30 cm/s	1ft/s	30 cm/s	1ft/s
Gradeability - stowed***	30%	30%	30%	30%
Turning radius - inside	1.80 m	6 ft	1.80 m	6 ft
Turning radius - outside	4.23 m	14 ft	4.23 m	14 ft
Controls	24 V DC proportional		24 V DC proportional	
Tyres (foam filled)	23 x 37 cm	9 x 14.5 in	23 x 37 cm	9 X 14.5 in

POWER				
Power source - DC	48 V DC (eight 6 V batteries, 350 Ah capacity)			
Power source - Bi-Energy	48 V DC (eight 6 V batteries, 350 Ah capacity) with Kubota 13.3 hp (9.9 kW) diesel driven alternator			
Auxiliary power unit	24 V DC	24 V DC	24 V DC	24 V DC
Hydraulic tank capacity	30.3 L	8 gal	30.3 L	8 gal
Fuel tank capacity	34.1 L	9 gal	34.1 L	9 gal

SOUND & VIBRATION LEVELS				
Sound pressure level (ground workstation)	<70 dBA (DC)	78 dBA (BI)	<70 dBA (DC)	78 dBA (BI)
Sound pressure level (platform workstation)	<70 dBA (DC)	76 dBA (BI)	<70 dBA (DC)	76 dBA (BI)
Vibration	<2.5 m/s <sup>2</sup>	<8 ft 2 in/s <sup>2</sup>	<2.5 m/s <sup>2</sup>	<8 ft 2 in/s <sup>2</sup>

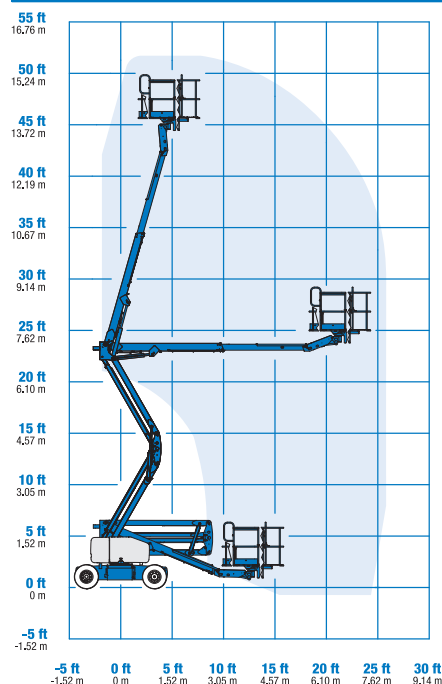
WEIGHT****				
CE DC (foam filled tyres)	6,963 kg	15,350 lbs	7,394 kg	16,300 lbs
CE Bi-energy (foam filled tyres)	7,190 kg	15,850 lbs	7,620 kg	16,800 lbs

### STANDARDS COMPLIANCE

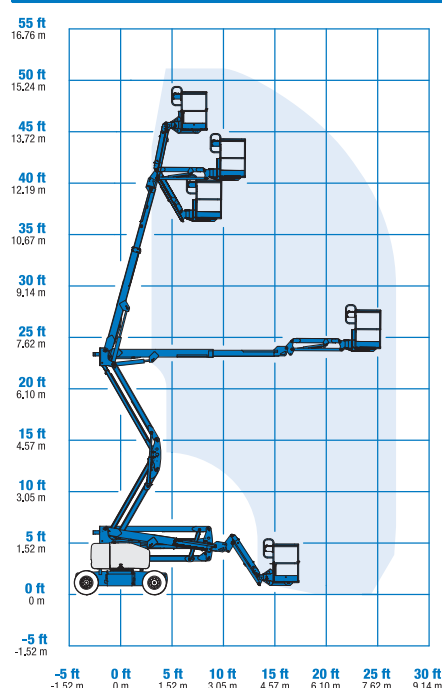
EU Machinery Directive 2006/42/EC  
 EU Standard EN280:2001, A2:2009  
 EMC Directive 2004/108/EC EN 61000-6-2, EN 61000-6-4  
 EU Noise Directive 2000/14/EC EN ISO 3744  
 EU Low Voltage Directive 206/95/EC EN 60204-1:2006

\* The metric equivalent of working height adds 2 m to platform height. U.S. adds 6 ft to platform height.  
 \*\* In lift mode (platform raised), the machine is designed to operate on firm, level surfaces only.  
 \*\*\* Gradeability applies to driving on slopes. See operator's manual for details regarding slope ratings.  
 \*\*\*\* Weight will vary depending on options and/or country standards.

### RANGE OF MOTION Z™-45/25



### RANGE OF MOTION Z™-45/25J



## Features

### EASILY CONFIGURED TO MEET YOUR NEEDS

#### PLATFORM OPTIONS

- Steel 1.83 m (6 ft) (standard)
- 1.83 m (6 ft) tri-entry steel platform (option)

#### JIB OPTIONS

- Non-jib
- Articulating 1.52 m (5 ft) jib boom

#### POWER

- 48 V DC (eight 6 V 350 Ah batteries)

#### DRIVE

- 2X4

#### BATTERY CHARGING OPTIONS

- 25 Amp 48 V onboard charger
- Onboard alternator powered by Kubota diesel 9.9 kW (13.3 hp) engine

#### TYRE OPTIONS

- Industrial foam-filled (standard)
- Industrial non-marking foam-filled

### STANDARD FEATURES

#### MEASUREMENTS

##### Z™-45/25

- 15.87 m (52 ft 6 in) working height
- 7.62 m (25 ft) horizontal reach
- 7.04 m (23 ft 1 in) up-and-over clearance
- Up to 227 kg (500 lb) lift capacity

##### Z™-45/25J

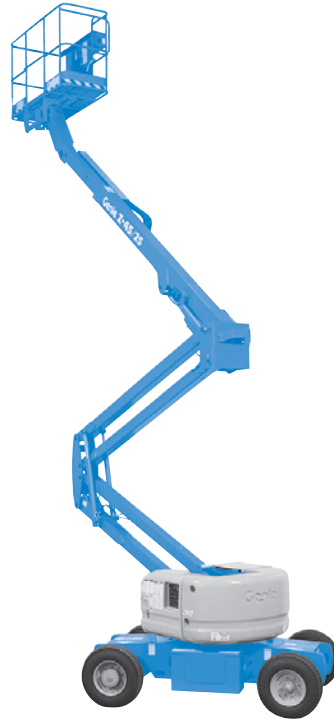
- 15.94 m (51 ft 9 in) working height
- 7.65 m (25 ft 1 in) horizontal reach
- 7.24 m (23 ft 9 in) up-and-over clearance
- Up to 227 kg (500 lb) lift capacity

#### PRODUCTIVITY

- Self-levelling platform
- Hydraulic platform rotation
- Fully proportional controls
- Thumb rocker steer
- Drive enable
- AC power to platform
- Horn
- Hour meter
- Tilt alarm
- Descent alarm
- Alarm package (flashing beacon & travel alarm)
- 355° non-continuous turntable rotation
- Zero tailswing
- Certified load sensor

#### POWER

- 48 V DC deep cycle battery pack
- 24 V DC auxiliary power
- Battery charge indicator - BCI (Bi-energy only)



### OPTIONS & ACCESSORIES

#### PRODUCTIVITY

- Platform swing gate
- Half-mesh platform inserts with swing gate
- Platform top auxiliary rail
- Air line to platform
- Power to platform (incl. plug, socket and ground fault interrupt leakage on request)
- Light package: 2 chassis mounted drive lights, 2 platform mounted work lights
- Hostile environment kit: cylinder bellows, boom wiper seals, platform control box cover
- Low temperature cut-out module
- Fire resistant hydraulic oil
- Biodegradable hydraulic oil
- Aircraft protection kit: platform foam padding & padded disable system\*\*
- Tilt cut-out option
- Tool tray
- Fluorescent tube caddy\*
- Panel cradle package\*\*\*
- Platform work lights
- Lockable platform control box cover
- Tow package

#### POWER

- Battery charge indicator - BCI (DC only)
- Low voltage interrupt with BCI
- Diesel cathalytic scrubber muffler (Bi-en only)
- Power Inverter (DC only)

\* Available aftermarket only

\*\* ZTM-45/25 J only, reduces platform capacity to 200 kg (440 lbs)

\*\*\* Requires tri-entry platform

#### Enquiries from Europe:

Tel: +31 165 519 361

Fax: +31 165 511 148

Email: AWP-InfoEurope@terex.com

#### Offices:

##### France

Tel: +33 (0)2 37 26 09 99

Fax: +33 (0)2 37 26 09 98

##### Germany

Tel: +49 (0)4221 491 810

Fax: +49 (0)4221 491 820

##### Spain

Tel: +34 93 572 50 90

Fax: +34 93 572 50 91

##### Scandinavia

Tel: +46 31 57 51 00

Fax: +46 31 57 51 04

##### The Netherlands

Tel: +31 165 519 361

Fax: +31 165 511 148

##### UK

The Maltings

Wharf Road

Grantham NG31 6BH

UK

Tel: +44 (0)1476 584333

Fax: +44 (0)1476 584334

##### Middle East

Tel: +971 4 399 0381

Fax: +971 4 399 0382

Email: AWP.Infome@terex.com

##### Russia & CIS countries

Tel: +7 495 660 32 30

Fax: +7 495 660 32 29

Email: info@terexrus.ru

#### Corporate Headquarters:

##### United States

18340 NE 76th Street

P.O. Box 97030

Redmond, WA

USA 98073-9730

Tel: +1 425 881-1800

Fax: +1 425 883-3475

#### Distributed By: